

# KAR4125/KAR4180

*LOUDSPEAKER VOLUME CONTROL*



**KAR4125: 25 WATTS**

**KAR4180: 80 WATTS**

The KAR range of remote audio volume controls offer high quality performance and style. Each unit features a 10-step attenuation plus OFF with non-stop selector giving a smooth variation in output level. Available in 25 watt and 80 watt versions, these volume controls offer excellent frequency response and efficiency.

The KAR4125 and KAR4180 versions include volume restoration and are suitable for either the three wire amplifier derived volume restoration or the more common 2 wire relay controlled volume restoration.

Volume restoration levels can be pre-set. When the restoration relay is activated the maximum volume can either be left at full volume or reduced by either -3dB or -6dB. This capability allows restored paging levels to be adjusted to suit the environment, either in a noisy warehouse or a quiet office.

- Flush or surface mounting
- 25 Watts or 80 Watts versions
- 10-step attenuation + OFF
- Non-stop selector
- Includes volume restoration



# KAR4125/KAR4180

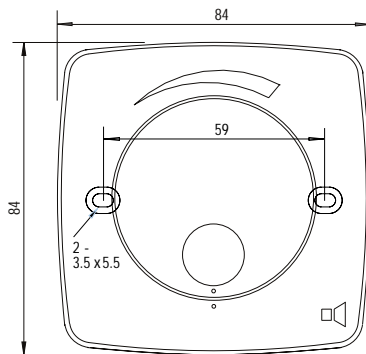
## TECHNICAL SPECIFICATIONS

### KAR4125 GENERAL INFORMATION

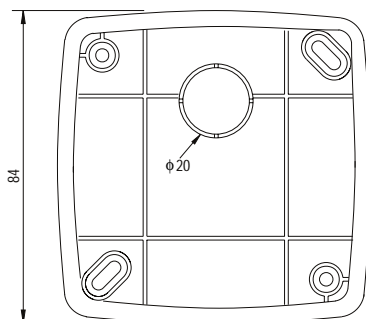
Rated Power, Watts	25 / 12
Transformer output steps @ 100 volt line, Volts	100/70.7/50/35.36/25/17.68/ 12.5/8.84/6.25/4.42/3.12/OFF
Transformer output steps @ 70.7 volt line, Volts	70.7/50/35.36/25/17.68/12.5/ 8.84/6.25/4.42/3.12/2.21/OFF
Attenuation per Step, dB	3
Total Attenuation, dB	30
Attenuation Positions	10 plus OFF
Insertion Loss, dB	0.4
Effective frequency range @ 1 kHz - 1 dB, Hz	40 - 20,000
Dimensions front and depth, mm (inch)	84 x 84 x 54 (3.31 x 3.31 x 2.13)
Net weight, Kgs (oz)	Flush: 0.17 (6.0) / Surface: 0.22 (7.7)
Color / Finish	White
Material	ABS Molded
Mounting	Flush and Surface

### KAR4180 GENERAL INFORMATION

Rated Power, Watts	80 / 40
Transformer output steps @ 100 volt line, Volts	100/70.7/50/35.36/25/17.68/ 12.5/8.84/6.25/4.42/3.12/OFF
Transformer output steps @ 70.7 volt line, Volts	70.7/50/35.36/25/17.68/12.5/ 8.84/6.25/4.42/3.12/2.21/OFF
Attenuation per Step, dB	3
Total Attenuation, dB	30
Attenuation Positions	10 plus OFF
Insertion Loss, dB	0.6
Effective frequency range @ 1 kHz - 1 dB, Hz	20 - 20,000
Dimensions front and depth, mm (inch)	149 x 87 x 61 (5.87 x 3.43 x 2.40)
Net weight, Kgs (oz)	Flush: 0.35 (12.35) / Surface: 0.44 (15.52)
Color / Finish	White
Material	ABS Molded
Mounting	Flush and Surface

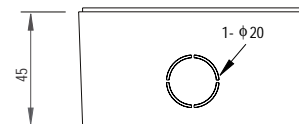


Front View

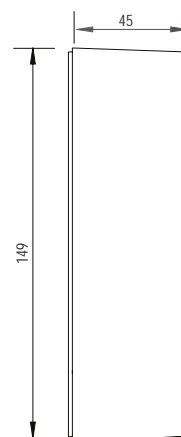


Surface Mount Box Rear View

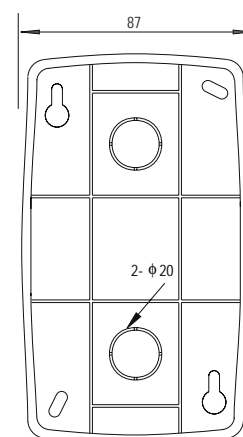
unit: mm



Top and Bottom View



Surface Mount Box Side View



Rear View

Conversion: 1" = 25.4mm

Measurement conversions are approximate

Design and specifications subject to change without notice.

For USA, Canada, South America, Europe, Africa & Middle East- info@ultrakpa.com

**ULTRAKPA Inc:**

Astoria, NY 1103, U.S.A

Phone + 1 (914) 210-1483

info@ultrakpa.com



www.ultrakpa.com